

# MONTHLY MEMBERSHIP PROGRESS REPORT

LOCATION NEPAL

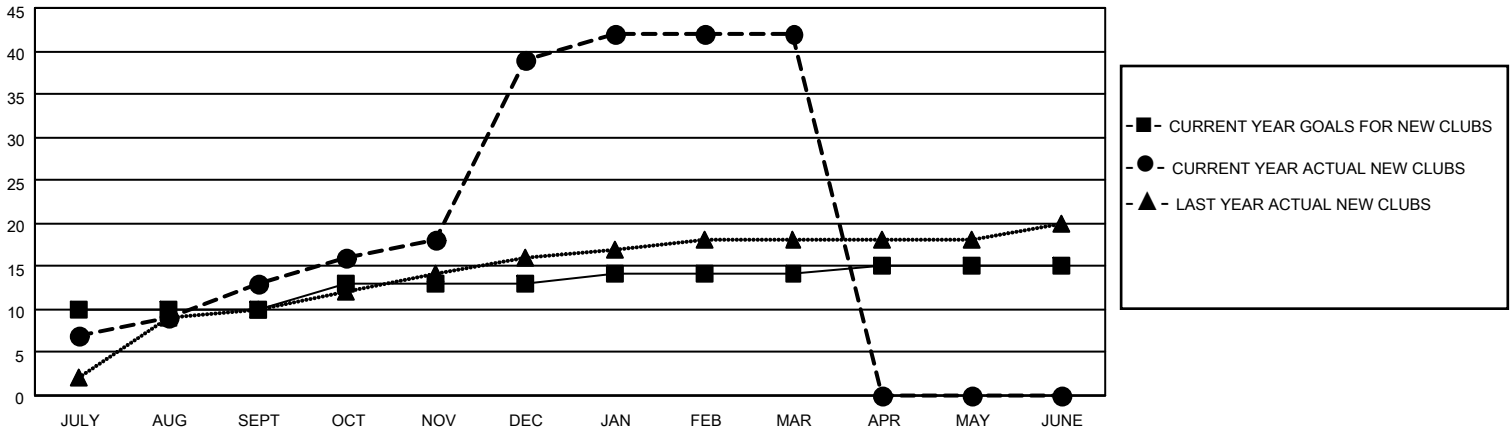
District 325A2

Results as of: 3/31/2021

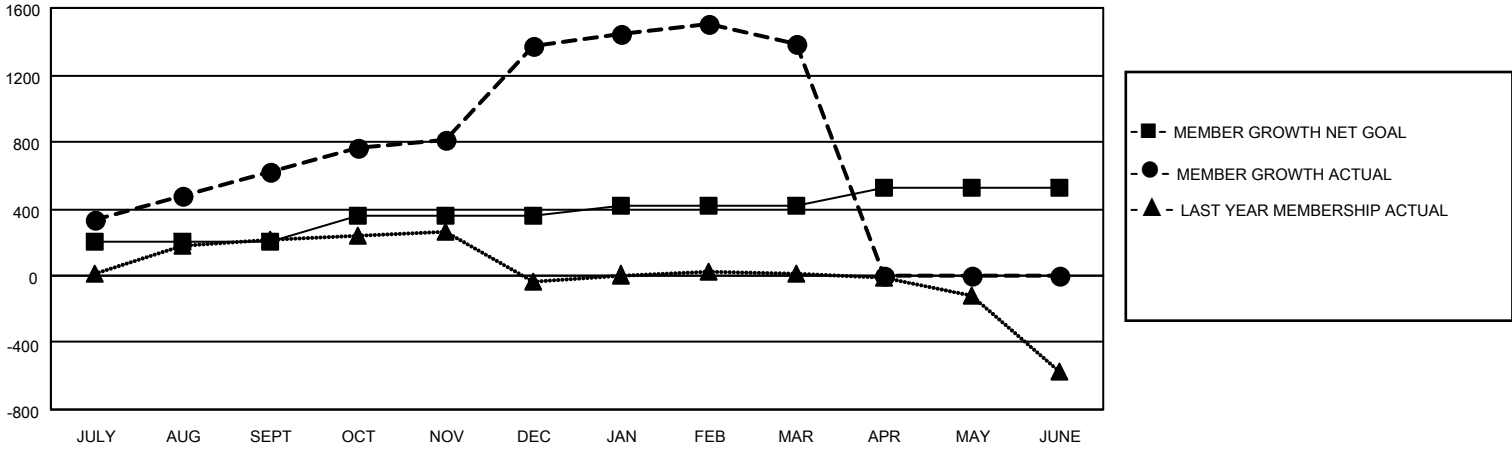
Clubs			
RESULTS FOR 2020-2021			
QUARTER	NEW CLUB GOAL	NEW CLUBS	DROPPED CLUBS
JULY/AUG/SEPT	10	13	1
OCT/NOV/DEC	3	26	0
JAN/FEB/MAR	1	3	9
APR/MAY/JUNE	1	0	0

Members			
RESULTS FOR 2020-2021			
QUARTER	MEMBER GROWTH NET GOAL	MEMBER GROWTH ACTUAL	DROPPED MEMBERS ACTUAL (including transfers)
JULY/AUG/SEPT	205	742	92
OCT/NOV/DEC	156	1006	238
JAN/FEB/MAR	55	251	203
APR/MAY/JUNE	105	0	0

**GOALS AND ACTUAL NEW CLUBS CUMULATIVE**



**GOALS AND ACTUAL MEMBERS CUMULATIVE**



**DROPPED CLUBS: 10**

152 CLUBS OF 239 ADDED 1 OR MORE NEW MEMBERS

**GENDER DISTRIBUTION**

MALE 4,258 (69.73%)  
FEMALE 1,848 (30.27%)

**DROPPED MEMBERS**

[CLICK HERE FOR CUMULATIVE MEMBERSHIP DATA](#)

DECEASED	2
CLUB CANCELLED	145
OTHER	386
<b>TOTAL</b>	<b>533</b>

TOTAL FAMILY UNIT MEMBERS	3,653
FAMILY MEMBERS PAYING HALF DUES	2,460